

Anti-LCAT antibody

Cat. No.	ml120916
Package	25 µl/100 µl/200 µl
Storage	-20°C, pH7.4 PBS, 0.05% NaN ₃ , 40% Glycerol

Product overview

Description	Anti-LCAT rabbit polyclonal antibody
Applications	ELISA, IHC
Immunogen	Fusion protein of human LCAT
Reactivity	Human, Mouse, Rat
Content	0.3 mg/ml
Host species	Rabbit
Ig class	Immunogen-specific rabbit IgG
Purification	Antigen affinity purification

Target information

Symbol	LCAT
Full name	lecithin-cholesterol acyltransferase
Synonyms	
Swissprot	P04180

Target Background

This gene encodes the extracellular cholesterol esterifying enzyme, lecithin-cholesterol acyltransferase. The esterification of cholesterol is required for cholesterol transport. Mutations in this gene have been found to cause fish-eye disease as well as LCAT deficiency.

订购热线: 4008-898-798

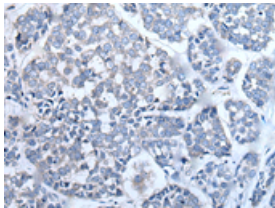
Applications

Immunohistochemistry

Predicted cell location: Secreted

Positive control: Human esophagus cancer

Recommended dilution: 25-100

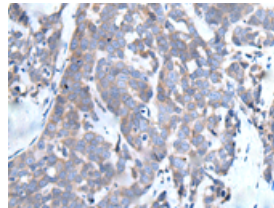


The image is immunohistochemistry of paraffin-embedded Human esophagus cancer tissue using ml120916(LCAT Antibody) at dilution 1/30. (Original magnification: ×200)

Predicted cell location: Secreted

Positive control: Human thyroid cancer

Recommended dilution: 25-100



The image is immunohistochemistry of paraffin-embedded Human thyroid cancer tissue using ml120916(LCAT Antibody) at dilution 1/30. (Original magnification: ×200)

ELISA

Recommended dilution: 2000-5000

联系电话: 4008-898-798, 021-61725725

联系QQ: 2881505695, 2881505696

邮箱: mlbio_cn@yeah.net

网址: www.mlbio.cn